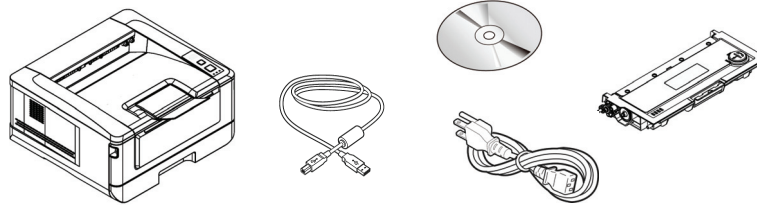




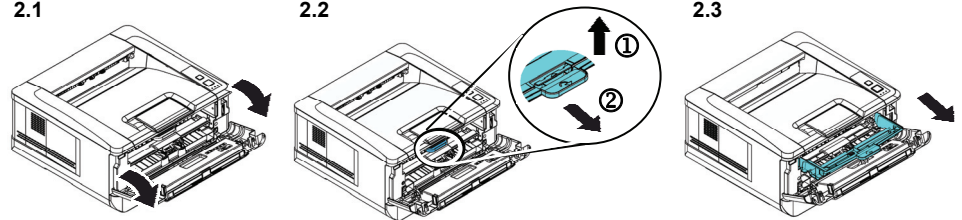
1 Package Contents

Lieferumfang
 Ce que contient la boîte
 Contenuti della confezione/Contenido del paquete/O que vem na caixa
 包裝內容
 包裝內容

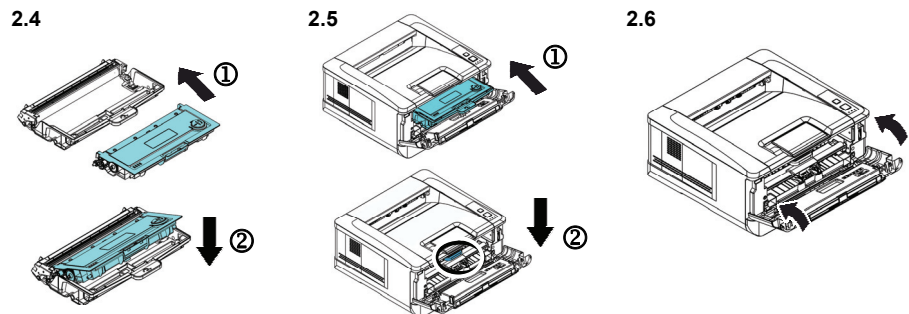


2 Install Toner Cartridge

Tonerkartusche installieren
 Installation de la cartouche de toner
 Installazione della cartuccia toner 2.1
 Instalar el cartucho de toner
 Instalação do Cartucho de Toner
 安裝碳粉匣
 安裝墨粉盒

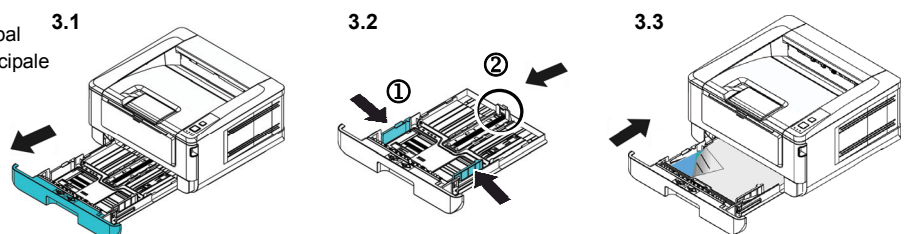


2



3 Load Paper into the Main Tray

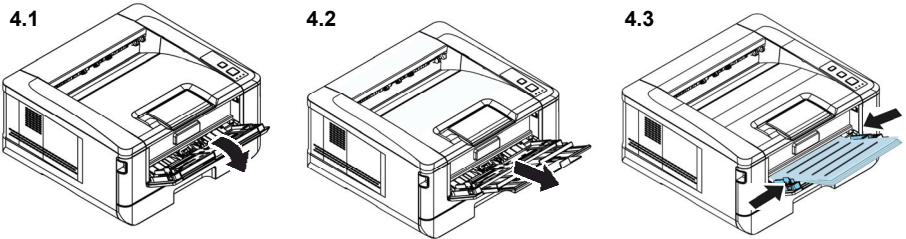
Papier im Haupteinzug einlegen 3.1
 Chargement du bac d'alimentation principal
 Caricamento del vassoio di ingresso principale
 Cargar la bandeja de entrada principal
 Carregamento da Bandeja de Entrada Principal
 將紙張放入主要紙匣
 將紙張放入主要紙盒



A4 Printer

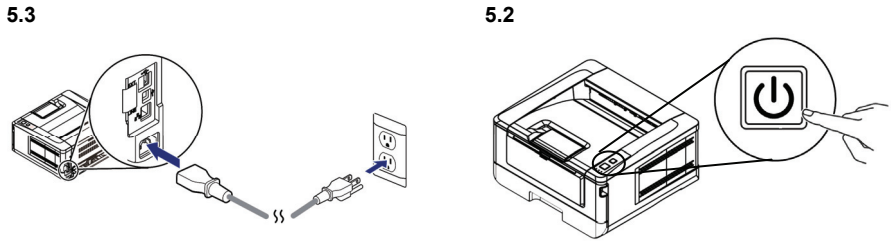
4 Load Paper into the Manual Tray

Papier im manuellen Papiereinzug einlegen
 Chargement du bac manuel
 Caricamento del vassoio manuale
 Cargar la bandeja manual
 Carregamento da Bandeja Manual
 將紙張放入手動紙匣
 將紙張放入手动纸盒



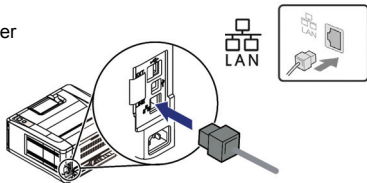
5 Connect to Power

Mit der Stromversorgung verbinden
 Brancher l'alimentation
 Collegamento all'alimentazione
 Conectar la alimentación
 Conecte à energia
 連接電源
 连接电源



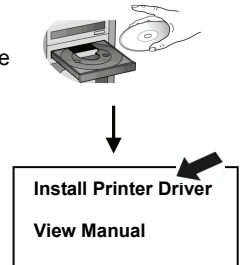
6 Connect to Computer (Ethernet)

Mit dem Computer verbinden
 Raccorder à l'ordinateur
 Collegamento al computer
 Conectar a su PC
 Conecte ao computador
 連接電腦
 连接电脑



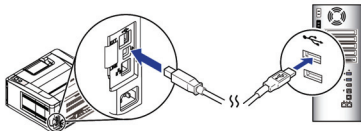
7 Install Printer Driver

Drucker- installieren
 Installation des pilotes du Imprimante
 Installazione dei driver di stampante
 Instalar los controladores de impresora
 Instalação do Impressora Drivers
 安裝驅動程式
 安装驱动程序



8 Connect to Computer (USB)

Mit dem Computer verbinden
 Raccorder à l'ordinateur
 Collegamento al computer
 Conectar a su PC
 Conecte ao computador
 /連接電腦
 连接电脑



Refer to the Manual in the CD for more information.

Weitere Informationen finden Sie auf der Anleitung auf der CD.
 Pour plus d'informations, référez-vous au manuel sur le CD.
 Fare riferimento al manuale contenuto nel CD per altre informazioni.
 Para obtener más información, consulte el manual que se encuentra en el CD.
 Para mais informações, consulte o manual no CD.
 更多操作的細節，請參考光碟內的使用手冊。
 更多操作的细节，请参考光盘内的使用手册。

- To obtain the IP address, long-press the Cancel button.
- Um die IP-Adresse zu erhalten, drücken Sie lange auf die Schaltfläche Abbrechen.
- Pour obtenir l'adresse IP, appuyez longuement sur le bouton Annuler.
- Per ottenere l'indirizzo IP, premere a lungo il pulsante Annulla.
- Para obtener la dirección IP, mantenga presionado el botón Cancelar.
- Para obter o endereço IP, pressione e segure o botão Cancelar.
- 要獲取 IP 地址，請長按取消按鈕。
- 要获取 IP 地址，请长按取消按钮。



European Union Regulatory Notice

Products bearing the CE marking comply with the following EU Directives:

- Low Voltage Directive 2014/35/EC
- EMC Directive 2014/30/EC
- Restriction of the use of certain hazardous substances (RoHS) Directive 2011/65/EU
- RED (Radio Equipment Directive) (2014/53/EC)